



**(CONCEPT OF VALUE ENGINEERING
IMPLEMENTED IN FACILITIES
MANAGEMENT)**

TABLE OF CONTENT

■ ABOUT US	PAGE 3
■ MANAGEMENT COMMITTEE PRINCIPLES	PAGE 4
■ OUR ENGINEERING SERVICES	PAGE 5-7
■ DESIGN AND PROJECT MANAGEMENT	PAGE 8
■ STANDARDS AND CODE OF PRACTICE	PAGE 9
■ HSE POLICY(HEALTH,SAFETY & ENVIRONMENTAL	PAGE 10
■ CONTACT US	PAGE 11
■ PROJECT REFERENCE & CLIENT LIST	PAGE 12-15
■ NOTABLE CIVIL PROJECT WITH PICTURES	PAGE 16-18

ABOUT US

WISETECH IS A UAE BASED COMPANY MAINLY ACTIVE IN ABU DHABI/DUBAI EMIRATE AND OUR SENIOR TEAM MEMBERS POSSESS MORE THAN 25+ YEARS EXPERIENCE IN ENGINEERING AND EXPERTISE IN THEIR TRADE OF BUSINESS.WE ARE HIGHLY COMMITTED TO CUSTOMERS AND TO PROVIDE EXCELLENCE TO THEIR REQUIREMENTS AND DELIVER THE PROJECT ON TIME.WE ARE HIGHLY MOTIVATED TEAM OF ENGINEERS DIRECTED TOWARDS SUSTAINABLE MAINTENANCE SOLUTIONS WITH CUSTOMER CENTRIC APPROACH.

MANAGEMENT COMMITTEE PRINCIPLES/AGENDA

OUR MISSION

OUR FIRM'S ULTIMATE MISSION IS TO PROVIDE 100% QUALITY SERVICES, AS PER AGREED CONTRACTS WITHIN BUDGETS AND CULTIVATE LONG TERM RELATION WITH CLIENTS

OUR VISION

WISE TECH STRIVES CONSISTENTLY AS A SPECIALIST IN MULTI-DISCIPLINARY SERVICE ACTIVITIES IN ENGINEERING WITH INNOVATION TO BRING OUT THE BEST AND HIGH STANDARD SERVICES AS FULFILMENT TO OUR SET MISSION.

OUR VALUES

WISE TECH BUSINESS VALUES ARE REPUTATION, COMMITMENT, PROFESSIONALISM AND PRESERVING TO ACHIEVE OUR COMMITTED VISION.

OUR ENGINEERING SERVICES

- CIVIL INTERIOR WORKS
- EXTERIOR WORKS
- FLOORING WORKS
- PAINTING WORKS
- ALUMINIUM AND GLASS WORKS
- ELV WORKS
- BUILDING AND VILLA MAINTENANCE WORKS
- ANNUAL MAINTENANCE WORKS
- DEMOLITION WORKS

CIVIL INTERIOR WORKS:

WE ARE WELL-VERSED IN METHODOLOGY OF CIVIL & INTERIOR WORKS AS PER UAE STANDARDS SUCH AS MASONRY WORKS, PLASTERING WORKS, INTERIOR PAINTING WORKS, PARTITIONS & PANELLING WORKS, DOORS & WINDOWS, WATER-PROOFING WORKS ETC.

EXTERIOR WORKS:

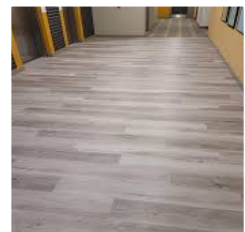
WISETECH IS FULLY COMPETENT TO UNDERTAKE ANY TYPE OF EXTERIOR WORKS SUCH AS CAR PARKING SCREED, EXTERNAL PAINTING (FOR VILLA, BUILDINGS, MALLS), ACP WORKS, INTERLOCK WORKS, EXTERIOR FOUNDATIONS FOR WATER TANKS OR AC EQUIPMENTS INCLUDING INSTALLATIONS

FLOORING WORKS:

WE PROVIDE ANY TYPE OF FLOORING AS PER DESIGN & SPECIFICATIONS SUCH AS CONCRETE SCREED 30MM TO 150MM, FLOOR TILING, WALL TILING, MARBLE WORKS, SELF-LEVELLING WORKS, VINYL FLOORING, ASPHALT FLOOR SCREED, EPOXY FLOORING WORKS WITH MOVEMENT JOINTS WITH HIGH QUALITY FINISHES.

ALUMINIUM & GLASS WORKS:

WE WILL DELIVER ANY TYPE OF GLASS WORKS AND ALUMINIUM DOORS OR WINDOWS FIXINGS AS PER CLIENTS REQUIREMENTS OF ANY SIZES FOR BUILDINGS & VILLAS. ADDITIONALLY WE ARE MAKING FABRICATIONS & INSTALLATION OF EXTERNAL SHEADS FOR EQUIPMENTS AND WATER TANKS.



ELV WORKS(LOW VOLTAGE)

WE HAVE EXPERTISE TO OFFER ELV WORKS WHICH INCLUDES TELEPHONE SYSTEMS,ACCESS CONTROL SYSTEMS,CCTV, SMATV,STRUCTURAL CABLING WITH SERVER NETWORKING,CAR PARKING MANAGEMENT SYSTEM AND ROAD BARRIER

ANNUAL MAINTENANCE WORKS

WE CAN UNDERTAKE BUILDINGS AND VILLA FOR ANNUAL MAINTENANCE CONTRACT AND CALCULATE ITS ASSET VALUE ACCURATELY.WE ALSO EMPLOY FULL-TIME TECHNICIANS FOR THE MAINTENANCE WHO ARE AVAILABLE 24/7 AND MAINTENANCE ENGINEERS WILL SUBMIT PPM REPORTS ON MONTHLY BASIS.

DEMOLITION WORKS

WE ARE ALSO ENROLLING OUR LABOURS IN DEMOLITION WORKS FOR INTERNAL UNITS SUCH AS SHOPS PROFESSIONALLY AND TAKE CARE OF SKIP SERVICES IN MALLS,BUILDINGS AND VILLAS INCLUDING SHELL & CORE.



DESIGN AND PROJECT MANAGEMENT

WISETECH ADVANCE PLANNING BEFORE KICKOFF TO ANY PROJECTS WILL BE BASED ON DESIGN AND APPROVED DRAWINGS.OUR ENGINEERING TEAM ALSO BELIEVES IN PROJECT PLANNING AND PROVIDE PROJECT COMPLETION PROFESSIONALLY AND UPDATE THE PROGRESS `TIME TO TIME..WE ARE USING SOFTWARES FOR DESIGN WHICH ARE MENTIONED BELOW.

- AUTOCAD 2021-2D
- PRIMAVERA P6 19.1
- CARRIER HAP 5.1
- MS OFFICE PROFESSIONAL
- ERP FOR ACCOUNTING

STANDARD AND CODE OF PRACTICE

WE ARE USING STANDARD CODE OF PRACTICE FOR OUR ENGINEERING TEAM ASSISTANCE, WHICH ARE MENTIONED BELOW.

- ABU DHABI OCCUPATIONAL SAFETY AND HEALTH SYSTEM FRAME WORK(OSHAD-SF)
- CODE OF CONSTRUCTION SAFETY PRACTICE-DUBAI MUNICIPALITY
- GREEN BUILDING REGULATIONS AND SPECIFICATIONS-DUBAI MUNICIPALITY
- NFPA STANDARDS AND CODES
- FIDIC
- IPC(INTERNATIONAL PLUMBING CODE)
- ASHRAE STANDARDS AND GUIDELINES
- BS STANDARDS

HSE POLICY

WISETECH IS COMMITTED TO TAKING CARE OF ENVIRONMENT AND MAINTAINING A CLIMATE OF SAFETY AWARENESS BY IMPLEMENTING AN EFFECTIVE HEALTH, SAFETY AND ENVIRONMENTAL MANAGEMENT SYSTEM THAT MAKES US CONSISTENTLY CONSTANT IN HSE PERFORMANCE AND ZERO ACCIDENTS

OUR BASE PLAN OF SAFETY PROGRAM IS BRIEFED SHORTLY BELOW:

- OUR SAFETY ENGINEER WILL ENSURE BEST SAFETY PRACTICES WHICH COMPLY TO WORK ENVIRONMENT.
- WE WILL ENSURE ALL EMPLOYEES/SUBCONTRACTORS/ SUPPLIERS RECEIVED APPROPRIATE TRAINING
- WE WILL ALSO PROVIDE APPROPRIATE EQUIPMENTS AND RESOURCES TO IMPLEMENT OUR HSE POLICY
- CONSULT AND INVOLVE OUR EMPLOYEES/ SUBCONTRACTOR/SUPPLIERS TO FOLLOW SAFETY PRACTICES STRICTLY WITHOUT ANY TOLERANCE
- OUR PRINCIPLES IN POLICY OF HSE WILL REDUCE ACCIDENTS, ILLNESS, INJURES, REDUCE THE ENERGY USAGE AND MINIMISE MATERIAL WASTAGES TO AVOID POLLUTION.

CONTACT US

ADDRESS:

#403,
4th FLOOR,
ROTANA MALL TOWER,
AL-BATEEN
ABUDHABI-UAE

LANDLINE:

+971-2-6223108

MOBILE:

+971-50 546 0926

OFFICIAL EMAIL:

wisetechauh@gmail.com



PROJECT REFERENCES & CLIENT LIST



WISETECH
GENERAL MAINTENANCE

(REGISTERED VENDOR)AT

Non AMC General Maintenance
Contractor



PROJECT REFERENCES

RAMHAN TOWER-ABUDHABI

EMIRATES TOWER-ABUDHABI

OWAIDA TOWER-ABUDHABI

AL MAHA COMPLEX VILLAS-
ABUDHABI

ELECTRA TOWER-ABUDHABI

PROJECT SCOPE

Multiple Refurbishment and Maintenance works

(REGISTERED VENDOR)AT

Non AMC General Maintenance
Contractor



PROJECT REFERENCES

DAMAC MARINA-BAY, REEM ISLAND, ABUDHABI

DAMAC OCEANSCAPE, REEM ISLAND, ABUDHABI

PROJECT SCOPE

Civil Maintenance works/Painting Works/External works

Tenants Maintenance works

OUR VALUED CLIENTS

- H.E. SHEIK MOHAMMED AHMED
KHALIFA ALSWEIDI OFFICE.
- M/S SULTAN ALSUWAIDI REAL
ESTATE.
- PVT. VILLAS OF MR.SAEED
HAMDAN ABDULLAH NADHEER
AL JNEBI.



NOTABLE CIVIL PROJECTS WITH PICTURES

CHATTELS & MORE @ REEM MALL(Shop no:F1-183)

SCOPE OF WORK:

1938 SQM 90 MM THK
Concrete Screeding

1938 sqm 3 MM THK Self-
Levelling works

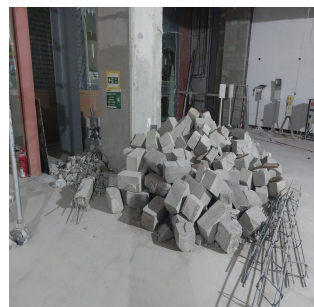
Movement Joint 25 m2 Interval
with Joint Filler

Electrical Room as Per ADDC
Regulations

FAHU Concrete Foundations
Works as Per Reem Mall
Managements Requirements

Demolition works

PROJECT PICTURES



H.E. SHEIK MOHAMMED AHMED KHALIFA ALSWEIDI VILLA

WATER TANK & FOUNDATION WORKS

SCOPE OF WORK:

- Removal of existing damaged water tank
- Concrete foundation works
- Installation of New Tanks using 25 Ton Power crane
- Plumbing Works
- Garden Plumbing works

PROJECT PICTURES



REPTON SCHOOL –ABU DHABI(FRY CAMPUS)

REFURBISHMENT WORKS

SCOPE OF WORK:

- Interlock works
- Demolition works
- Service Area Plumbing Maintenance
- Kids Class Maintenance works
- Grouting works all class rooms

PROJECT PICTURES:

